

ACE Visual Inspection 80

Portable Modular Industrial Videoscope



Probe outer diameter small as 0.95mm
Tungsten wire robust and wear-resistant
1920×1200 resolution high-definition



Portable Modular Industrial Videoscope

The ACE VI 80 series industrial videoscope features a million-pixel camera, sapphire glass lens, and a high-definition large screen, providing clearer imaging. The rear-mounted LED light source illuminates larger areas. It includes joystick control for 360° omnidirectional guidance, with customizable fixed bending angles for easier operation. The device supports interchangeable probe insertion tubes of various diameters and lengths, ranging from 0.95mm to 8.3mm outer diameters, to meet a wide range of inspection requirements. The flat icon touch control buttons are simple to operate and ensure stable performance. Made with new materials and processes, the device meets the IP65 protection standard, offering resistance to oil, water, and dust. It has passed tests for rain, dust, vibration, and extreme temperatures, ensuring durability. The modular design of the product, combined with a local after-sales service system, results in shorter repair cycles and lower maintenance costs.

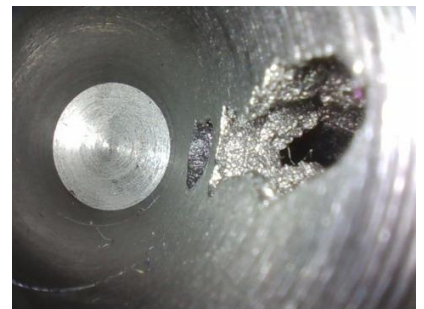
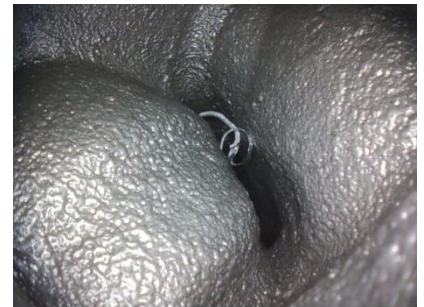
Applicable Industries

Aerospace, automotive manufacturing, rail transportation, petrochemicals, energy and power, hydraulic machinery, mechanical manufacturing, food and pharmaceuticals, military and defense, as well as research institutions and universities

Product Advantages



1. Portable Modular Design
8-inch high-definition touchscreen
More convenient operation
2. Higher Clarity
Touchscreen: 1920x1200 resolution
Camera: 2 million effective pixels
3. Brighter Light Source
Rear-mounted high-power LED light source with fiber optic illumination reaching 100,000 lux, illuminating larger spaces.
4. Easier to Use
Quick-release probe insertion tube module compatible with multiple specifications: 0.95mm -8.3mm and custom-made probes



Probe Insertion Tube Module

Insertion Tube Outer Diameter	0.95mm, 1.2mm, 1.8mm, 2.0mm, 2.4mm, 2.8mm, 3.9mm, 6.0mm, 8.3mm (customized outer dimensions available)
Camera Pixel Count	160K, 300K, 440K, 520K, 1M, 2M ultra-high-definition pixels, customized cameras
Insertion Tube Length	1m / 2m / 3m / 5m (up to 12m customizable)
Direct View Depth of Field	3mm-100mm, 4mm-120mm, 10mm-150mm, 15mm-infinity, 30mm-infinity, 50mm-infinity (customizable depth of field range)
Side View Depth of Field	2mm-15mm, 4mm-120mm (customizable depth of field range)
Field of View	50°, 90°, 100°, 120°, 130°
Illumination Type	100,000 Lux (for 6.0mm diameter)
Illumination Brightness	6500K
Color Temperature	30,000 hours
Light Source Lifespan	360° omnidirectional steering at the front end of the insertion tube, minimum angle greater than 160° / rigid rod mirrors do not bend
Bendable Steering	Single joystick bending control, operable with one hand
Steering Operation	Probe Material: Dual-layer special alloy tungsten wire braided sheath for the flexible insertion tube (other protective sheaths customizable) / rigid rod mirrors have alloy housing
Probe Material	IP68
Protection Rating	Insertion tube can withstand 1 bar water pressure, equivalent to 10.2 meters depth
Water Resistance	Operates normally in diesel, aviation fuel, hydraulic oil, lubricating oils, weak acids, weak bases, or 5% salt solutions
Liquid Resistance	-30°C to 100°C (operating temperature range for the insertion tube)
Operating Temperature Range	one host can accommodate multiple diameter and length endoscope insertion tubes.
Interchangeable Probes	0.95mm, 1.2mm, 1.8mm, 2.0mm, 2.4mm, 2.8mm, 3.9mm, 6.0mm, 8.3mm (customized outer dimensions available)

host system

Host System	Split-Type Host System
System Memory	Built-in 128GB SSD Solid State Drive
Display Screen	8-inch High-Brightness Touchscreen, 500cd/m ² sunlight visible
Screen Resolution	Resolution: 1920x1200
Photography	Photo Recording Format: JPEG (.JPG) Resolutions: 1920×1080, 1440×1080, 1280×720, 960×720, 720×720, 400×400
Video Recording	Video Recording Format: MPEG4 (.MP4) Resolutions: 1920×1080, 1440×1080, 1280×720, 960×720, 720×720, 400×400
Data I/O Interface	1 USB Port, image and video files can be directly stored on a portable USB drive
Software Functionality	File Management, Annotation, Watermark, etc.
Video Output	HDMI Video Output Interface
Power Supply	Built-in Battery Pack, over 5 hours of operation
AC Power	220V 50-60Hz Adaptive
Power Failure Protection	Power Failure Protection
Operating Temperature	Operating Temperature Range: -30°C to 50°C
Relative Humidity	Up to 95%, no condensation
System Language	Chinese, English, etc.
Weight	1.5kg
Screen Dimensions	24cm×20cm×6cm (length×height×thickness)